

Part 2

OR department

The Unrestricted Area



Unrestricted Areas, Examples

- Patient receiving/holding areas
- Dressing rooms
- Lounges and offices



Semi-restricted Area

- A *semi-restricted area* comprises the *peripheral support areas surrounding the restricted area* of a surgical suite.
- Traffic is only allowed for authorized team members and patients

The Semi-restricted Area



Semi-restricted Area

These support areas include facilities such as:

- ❖ storage areas for clean and sterile supplies
- ❖ sterile processing rooms
- ❖ work areas for storage/processing of instruments
- ❖ scrub sink areas
- ❖ corridors leading to the restricted area
- ❖ pump rooms

Semi-restricted Area

- Team members wear
 - hospital laundered scrub attire,
no outside clothes
 - head and facial hair is covered
 - shoe covers
 - **masks are not required** in this area

Indicate Semi-restricted and Restricted



From Unrestricted to Semi-restricted



Unrestricted

Semi-restricted

Signage



OR Corridors



Scrub Sinks



Sterile Processing Areas



Restricted Area

- Includes:
 - ❖ OR
 - ❖ Clean core area



Restricted Area

- A ***restricted area*** in a surgical suite is a designated space that:
 - can only be accessed through a semi-restricted area
 - in order to achieve a high level of control
- *Traffic* in the restricted area is limited to *authorized* personnel



Restricted Area

A *restricted area* in a surgical suite

- Personnel are required to wear:
 - ♣ Surgical attire, no outside clothes
 - ♣ Cover head and facial hair
 - ♣ Masks are required where:
 - ♦ open sterile supplies or
 - ♦ scrubbed persons may be located

Restricted Area



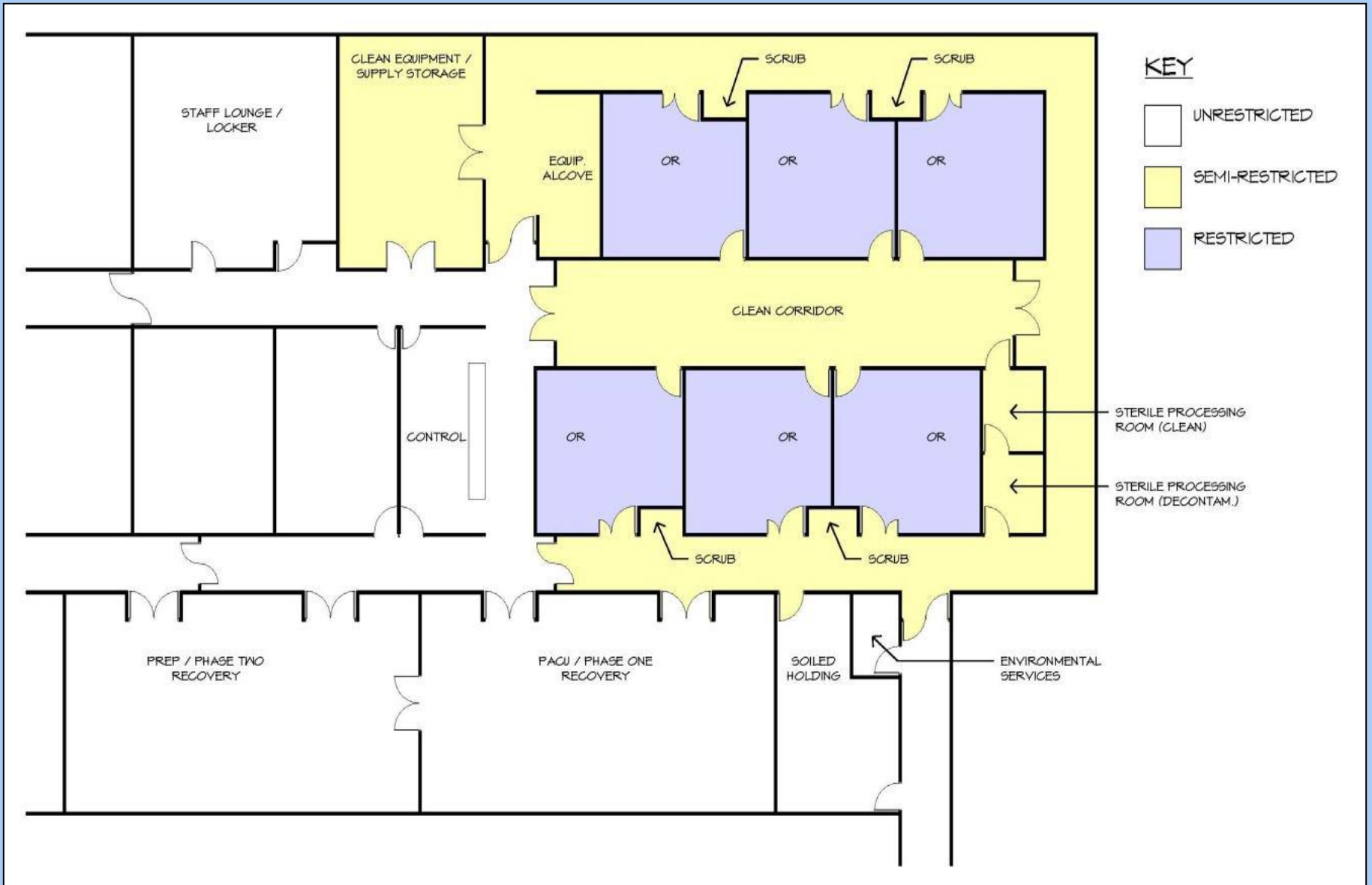
Restricted Area

- People coming in to the semi-restricted and restricted areas for a brief time for a specific purpose should
 - cover all head and facial hair
 - put on surgical scrubs or a single-use coverall suit
 - all outside clothing must be covered
- Examples include
 - law enforcement officers
 - parents
 - biomedical engineers

The Transition Zone

- Team members can enter into an unrestricted area in street clothing and exit into the semi-restricted or restricted area in surgical attire
 - locker rooms
- May also be used as a security point to monitor traffic

Surgical Suite



Space in Today's Operating Rooms

- The minimum space in today's operating rooms must be sufficient to accommodate all equipment and personnel needed in the OR, not just the equipment and personnel associated with administration of anesthesia.
- For example, a hernia repair can be performed under local, regional, or general anesthesia and the size of the OR for the procedure should not be based on the type of anesthesia used but on the equipment and number of staff required.

Inpatient Surgery Facilities

The inpatient surgical facility text provides requirements for:

- ♠ general operating rooms

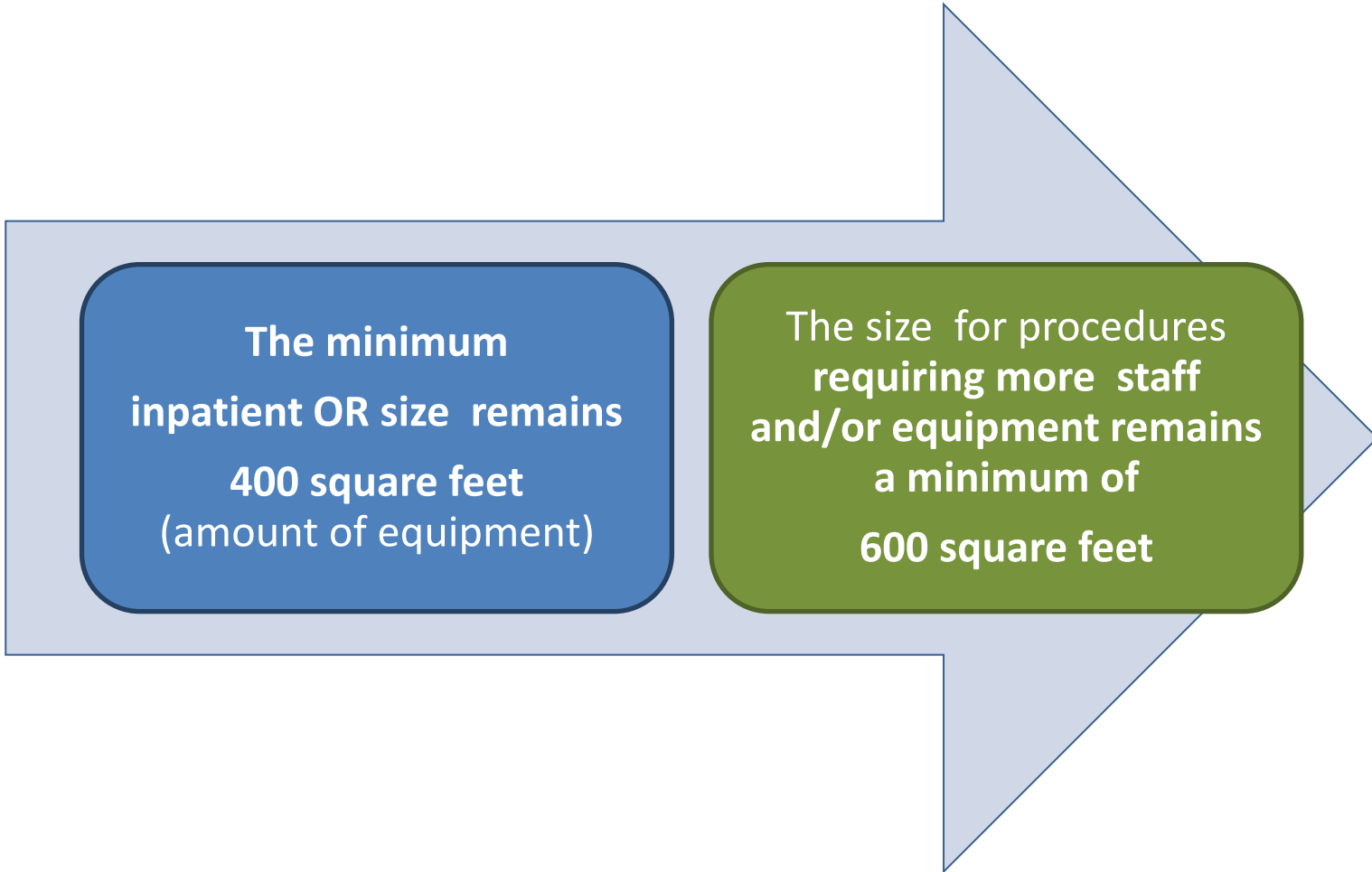
- ♠ hybrid ORs

- ♠ ORs for surgical procedures using:

- portable imaging equipment or

- that require additional personnel and/or large equipments

Inpatient Surgery Facilities



The minimum
inpatient OR size remains
400 square feet
(amount of equipment)

The size for procedures
requiring more staff
and/or equipment remains
a minimum of
600 square feet

Size for the Hybrid OR

A size for the hybrid OR is suggested:

- ❑ A **minimum** room dimension of **24 feet**
- ❑ **22 feet** is permitted in renovation projects where structural limitations make this dimension impossible to meet.

HYBRID OR

